



Creating Account and Connecting in the 3D World

v.1.0 29/01/2018

ACCOUNT CREATION

You can create an avatar account (Firstname, Lastname, Password) here:

<http://wopvr4stem.sch.gr:9000/wifi>

3D VIEWER INSTALLATION

To connect to the 3D World with that avatar you need 3D Viewer Software such as Firestorm or Kokua. We recommend using Firestorm. You can download it here:

<http://www.firestormviewer.org/downloads/>

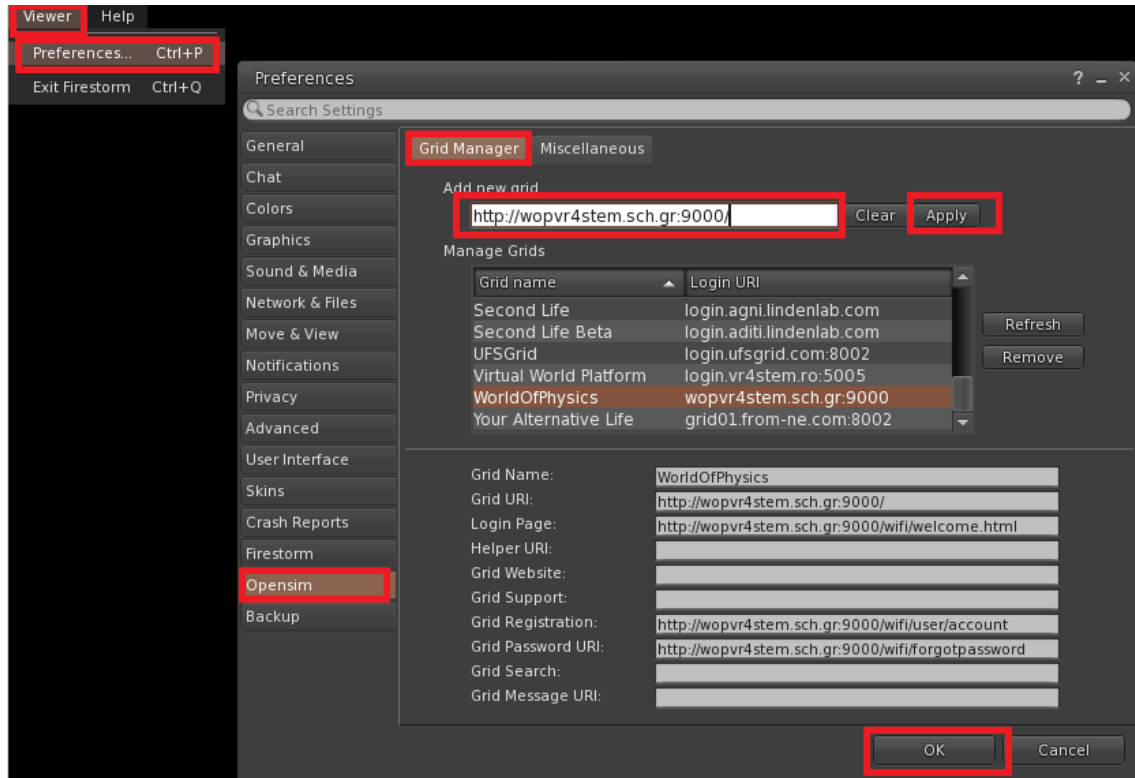
Select the Operating Version you use and then download the version that indicates **SL & Opensim**(32bit or 64bit)



ADD THE WORLD-OF-PHYSICS 3D WORLD

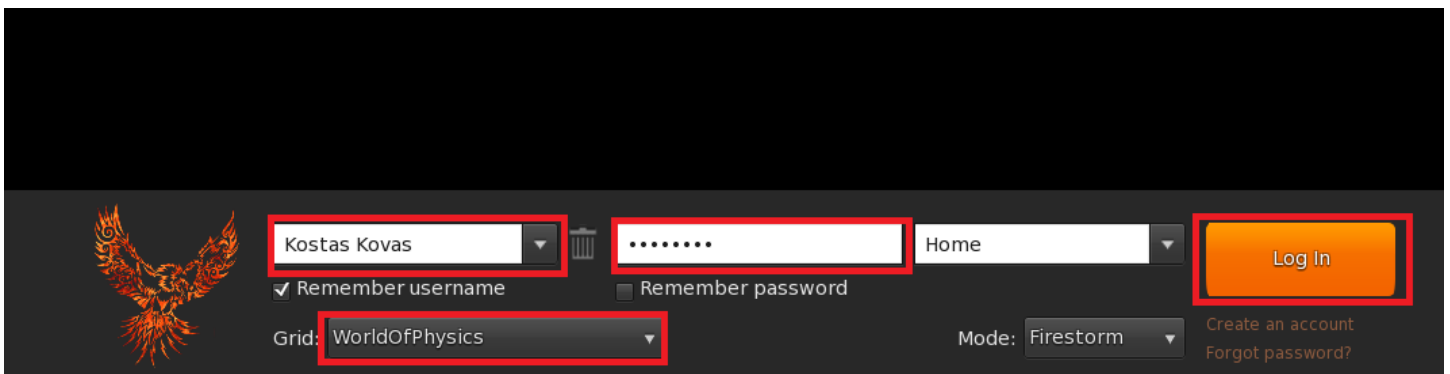
Once you have downloaded, installed and opened Firestorm, here are some instructions to connect to the VR4STEM 3D World:

1. Viewer -> Preferences -> OpenSim
2. Add new grid: <http://wopvr4stem.sch.gr:9000> then click 'Apply' and 'OK'



CONNECT TO THE 3D WORLD

Use your username "Firstname Lastname" and password and select "WorldOfPhysics" grid from the drop down menu. Click 'Log In' to enter.



BASIC CONTROLS

Moving and Camera Control

http://wiki.phoenixviewer.com/fs_movement_and_camera

All Keyboard Shortcuts

http://wiki.phoenixviewer.com/keyboard_shortcuts

Chat

http://wiki.phoenixviewer.com/fs_chat

Inventory

http://wiki.phoenixviewer.com/my_inventory_tab

Editing Outfits

http://wiki.phoenixviewer.com/my_outfits_tab

Editing Shapes and Other Body Parts

http://wiki.phoenixviewer.com/fs_edit_body_part

Gestures

http://wiki.phoenixviewer.com/fs_gestures